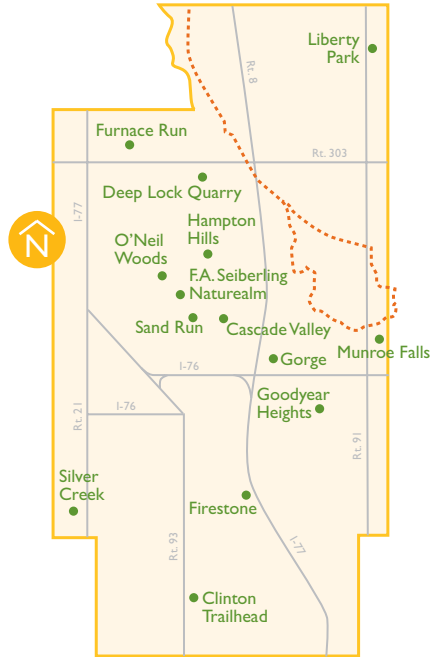




# Bike & Hike Trail in Summit County



## HOW TO GET TO Bike & Hike Trail.

The Bike & Hike Trail can be accessed at trailheads listed next to the map inside this guide. Metro Parks parking lots are found at all trailheads.

### The Bike & Hike Trail follows the course of the old Akron, Bedford & Cleveland Railroad from Hudson Drive in Stow north to Route 8 in Boston Heights. The AB&C

interurban (or "Alphabet Railroad") carried riders from Akron to Cleveland's Public Square in about 2½ hours for the price of 50 cents. Service on the railroad line was discontinued in 1932. East of Route 91 in Munroe Falls, the path parallels a scenic section of the Cuyahoga River where Great Blue Herons and Canada Geese can be seen. South of Boston Mills Road in Boston Heights, the Sharon Conglomerate rock walls of the Boston Ledges rise along the trail.



## Information

Portions of the Bike & Hike Trail use neighborhood streets. Please follow the green Bike & Hike Trail signs until you rejoin the established trail.

Metro Parks rangers and volunteers patrol the Bike & Hike Trail on bicycles for visitor safety and assistance. For up-to-date Metro Parks recreational information, call the 24-hour Seasonal Information Line at 330-865-8060.



## CAN YOU FIND THESE?

Keep your eyes open for these ● plants and ● animals along the Bike & Hike Trail!

- Common Polypody
- Spinulose
- Intermediate Wood Fern
- Bracken Ferns
- Tall Bellflower
- Thimbleweed
- Prairie Plant Community
- Great Blue Herons
- Canada Geese
- Spring Peepers (frogs)
- Ruffed Grouse
- Bob-White



**MetroParks**  
SERVING SUMMIT COUNTY

August 2004 – 10M

# EXPLORE!

To learn more about Metro Parks, Serving Summit County, please visit our Web site:  
[www.summitmetroparks.org](http://www.summitmetroparks.org)

